




Analysis for COBOL & PL/I (Re-)understand Applications

Which developer doesn't want that ?

A clear presentation for large and complex applications so that you can **understand** the logic and implementation **simply and directly**?
 Accurate and up-to-date **documentation** of the functionality and interrelationships in order to be able to **modernize** the applications **efficiently**, develop them further or develop them from scratch?

AMELIO Logic Discovery


...solves precisely these Problems !




Understand Complexity

- Loss of knowledge due to lack of documentation
- Knowledge carriers retire
- Application size, complexity and strong networking make maintenance difficult
- Existing documentation is not suitable for understanding and modernization
- Regain knowledge

Knowledge transfer is guaranteed




- Complete automatic analysis of Cobol and PL/I applications
- Language-neutral representation of the application logic in different levels of detail
- Expandable and configurable for targeted analyzes



Knowledge documented automatically

- Facilitate communication in the development department
- Creation of targeted analyzes in project preparation
- Understandable representation of application logic
- Automated Application Analysis

Your Advantage



- Clear, well-structured visualization for large and complex applications so that they can be easily and directly understood
- Simplify knowledge transfer, onboarding and communication
- In-depth and targeted analyzes
- Reliable basis for modernization and re-engineering projects
- Made in Germany

AMELIO Logic Discovery

Understanding COBOL and PL/I Applications!

AMELIO Logic Discovery is an innovative analysis tool that helps you to better understand your native and generated COBOL, PL/I and Delta ADS applications and to comprehensively secure the relevant functionality.

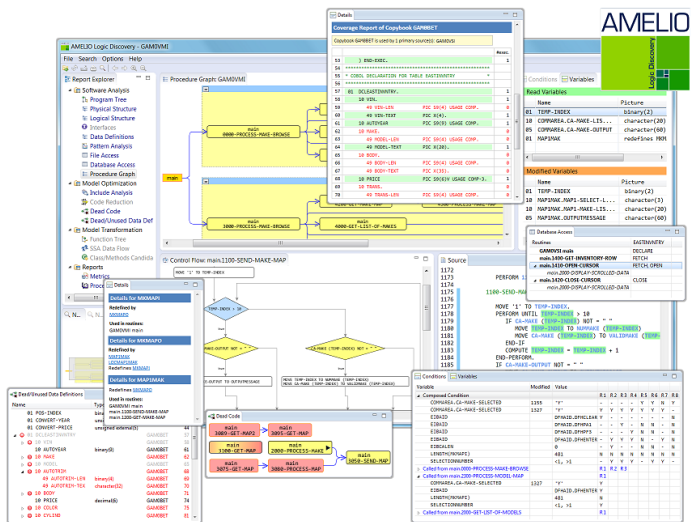
Large applications have usually grown over many years and naturally become more and more complex. Maintaining these applications is becoming increasingly difficult for the successors of the original developers.

In the process of understanding an application, gathering information about how it was implemented is the first necessary step. However, statements about the actual functions cannot yet be made on this basis. This requires an in-depth analysis. AMELIO Logic Discovery therefore not only collects information about HOW the application was implemented, but also recognizes the logical relationships and also determines WHAT was implemented.

AMELIO Logic Discovery determines ...

... WHAT is implemented in an application. The regained knowledge is presented in a language-neutral way and independently of the technology.

To do this, the source code is first comprehensively and completely analyzed, and it is determined HOW the application was implemented. Implementation details are extracted. What components is the application composed of, what relationships exist between the components and what interfaces do they have.



"AMELIO Logic Discovery helps and presents everything very clearly!"

msg Systems

AMELIO Logic Discovery

... is available for the Analysis of COBOL and PL/I Applications.

The implementation details are abstracted, the information obtained is linked, logical structuring is carried out and knowledge about the functionality of the application is derived.

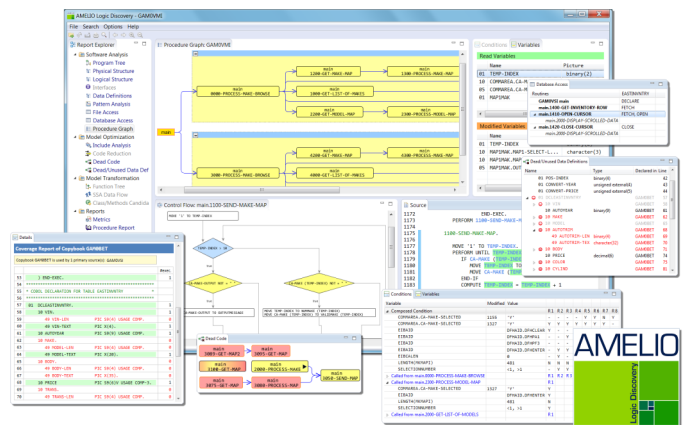
The result is a clear representation of the application logic, in which it is possible to navigate freely across all levels, in topic-related views and in freely selectable levels of detail, so that your employees can easily understand the applications.

For COBOL and PL/I

AMELIO Logic Discovery provides most functions for both languages. Additional language-dependent analyses are available to optimally handle special features of the different languages.

AMELIO Logic Discovery makes it much easier to understand the application: Through procedures and logical groupings, as well as determining their interfaces, determining variable scopes and deriving suggestions for a refactoring.

AMELIO Logic Discovery can be extended. For example, it is possible to use code smell analysis to determine whether company-specific coding standards are being violated and, if so, at what points. For modernisation projects, the “points of interest” can be determined automatically.



“AMELIO Logic Discovery offers new, flexible and structured views on our applications. Especially the logical views help us to find and understand the bottlenecks in our application.”

Marcel Rozema, Senior Software Architect, RDW



AMELIO Family

Understand and Modernize Applications automatically!

The AMELIO Family

Especially for clean-up and modernization projects, it is possible to connect AMELIO Logic Discovery with other tools of the AMELIO family and thus perform desired changes to the source code fully automatically.

Our tools help you to analyse COBOL and PL/I applications in a targeted manner, to adapt them quickly and securely to new requirements and technical infrastructures, and to reliably assess risks.



You can also automate the analysis, development, migration and modernization of your applications with **AMELIO**.

www.delta-software.com/amelio

Delta Software Technology

Delta Software Technology is a specialist for generative development tools that automate the modernisation, integration, development and maintenance of individual IT applications. Our solutions help you to quickly and safely adapt your applications to new business requirements, architectures, technologies and technical infrastructures.

Delta has a more than 45-year track record of successfully delivering advanced software technology to Europe's leading organisations, including AMB Generali, ArcelorMittal, Deutsche Telekom, Hüttenwerke Krupp Mannesmann, Gothaer Versicherungen, La Poste, RDW, Suva and UBS.

Get in touch with us

Delta Software Technology GmbH
Eichenweg 16
57392 Schmallenberg
Germany

Phone +49 2972 97190
E-mail info@delta-software.com

delta-software.com